

POLICE PRECEPT CONSULTATION 2018/19

PEOPLE OPCC ENGAGED WITH:

4,817



- FACE-TO-FACE ROADSHOW
- RADIO INTERVIEWS
- DORSET ALERT
- SOCIAL MEDIA
- NEWS RELEASES
- LIVE WEB CHAT



ONLINE SURVEY RESULTS

Do you agree that policing in Dorset requires more investment?

YES 90%  **NO 10%**

Would you be prepared to pay an additional £1.00 per month to support policing in Dorset?

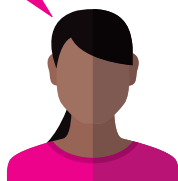
YES 79%  **NO 21%**

YOUR COMMENTS...

"We need the presence of an active police force; it is that simple, so funding is vital."



"I support more investment, but this must go together with better efficiency management."



"Further funding should come from central government and not from additional local tax."



"I think this increase is reasonable for such an over-stretched service."



CONTACT US

Office of the Dorset Police & Crime Commissioner
Force Headquarters,
Winfrith, Dorchester
Dorset DT2 8DZ

T 01202 229084
E pcc@dorset.pnn.police.uk
or email in confidence at:
contactpcc@pccdorset.org.uk
W dorset.pcc.police.uk

Dorset Police
In an emergency call 999
For non-emergencies call 101
Or do it online at:
dorset.police.uk

ABOUT THIS LEAFLET

This leaflet meets the PCC's obligation, as the Precepting Authority, to explain to the public the reason for the decision to raise the policing element of the Council Tax Precept (as set out in the Local Government Finance Act 1992). To print this leaflet, it has cost approximately 1.2p per copy.

HOW YOUR COUNCIL TAX SUPPORTS DORSET POLICE 2018/19



SETTING THE PRECEPT

Each year, it is my responsibility to set the part of your council tax that goes towards funding Dorset Police. Never before has this decision come at such a pivotal time for policing.

In recent years, Dorset Police has seen an increase in demand, a reduction in real terms funding and experienced the associated detrimental impact on officer and staff welfare.

I was disappointed that no additional central Government funding was forthcoming for Dorset this year. Since 2010, I have worked closely with Dorset Police to deliver substantial efficiency savings of over £37.3m.

We have made incredibly tough decisions, involving the sale of police premises and changes to local enquiry offices, to name but a few examples.

Opportunities for further meaningful savings are becoming less obvious, unless we are willing to compromise on workforce numbers and the quality of service provided to the public.

Residents recognise these challenges, with 79% of those who took part in my consultation prepared to pay an additional £1 a month (for an average Band D household) to support policing in Dorset.

Your precept contributions will allow for resources to ensure that Dorset Police can evolve and continue to effectively meet the modern demands we face.

I am confident that this is the right and only choice for Dorset.



Martyn Underhill

Dorset Police & Crime Commissioner



2017/2018 £s	POLICE PRECEPT CONTRIBUTIONS PROPERTY TYPE	2018/2019 £s
129.72	Band A	137.72
151.34	Band B	160.67
172.96	Band C	183.63
194.58	Band D	206.58
237.82	Band E	252.49
281.06	Band F	298.39
324.30	Band G	344.30
389.16	Band H	413.16

Further detail can be found at www.dorset.pcc.police.uk

WHERE THE MONEY COMES FROM

2017/2018 £000s	WHERE THE MONEY COMES FROM	2018/2019 £000s
4,392	Income generated by Dorset Police	4,001
5,238	PFI specific grant (credits)	5,238
2,217	Specific Government grants	1,336
3,393	Other grants, reimbursements and contributions	3,729
770	Remaining council tax from previous financial year	842
1,244	Contribution from reserves	2,339
65,668	Funding from Government	65,668
54,819	Total council tax from current financial year	59,005
137,741	Total funding	142,158

WHERE THE MONEY IS SPENT

2017/2018 £000s	WHERE THE MONEY IS SPENT	2018/2019 £000s
107,047	Dorset Police employees	109,143
4,896	Premises	4,658
8,035	PFI building costs	8,025
1,917	Transport	2,180
7,228	Supplies and services	9,957
6,219	Specialist police support services	4,559
128	Capital financing costs	1,359
135,470	Total Dorset Police expenditure	139,881
966	OPCC employees	984
306	OPCC running costs	294
1,272	Total OPCC expenditure	1,278
999	Commissioned services	999
898	Grant funded commissioned services	897
(898)	Victim services funding	(897)
999	Total commissioned services expenditure	999
137,741	Gross expenditure	142,158

